

St Anthony's Catholic Primary School & Nursery
Farnham Road, Farnham Royal
Slough, Berkshire SL2 3AA
Tel: 01753 645828

email: post@stanthonys.slough.sch.uk
website: www.stanthonys.slough.sch.uk

Head Teacher:
Mrs S Oppé

Chair of Local Academy Committee:
Mrs E Antao-Bento

SCHOOL PROSPECTUS

Our School Prayer

St Anthony please help us
in all that we do.

To work well with others
and care for them too.

We know that Jesus died for us
to set us all free.

Please guide us St Anthony
to be the best that we can be.

Learning Growing and Living with Jesus



This is an Inspirational School

Welcome to St Anthony's Catholic Primary School and Nursery. We are a Voluntary Aided co-educational school for children from 3 to 11 years. We welcome children from all faiths and those with no faith, with places subject to our Admissions Policy. The whole school works together to ensure your child feels safe and secure. Staff are appointed after rigorous procedures, including police checks, are carried out.



At St Anthony's School we believe that every individual is a unique person created in the image of God. We are fully committed to the continuous development of each individual and thus our mission states:-

Learning, Growing and Living with Jesus

It is with this mission in mind that we aim to:

- promote respect for self, others, the community and the environment
- protect and care for the individual ensuring all children have equal opportunity to achieve their potential, thus we may adjust the timetable to suit individual children taking account of physical disabilities, offering support as and when needed
- ensure that all children are treated fairly without bias of gender, ethnicity etc.
- develop the individual with a firm foundation for a Christian life based on Gospel values whilst respecting the beliefs of others
- follow the British values of democracy, the rule of law, individual liberty, mutual respect and tolerance
- plan and implement a structured learning programme, which is purposeful and well organised based on the Early Years Framework, the National Curriculum and the Directory for R.E.
- we strive for excellence in all we do and endeavour to give our children a rich and diverse curriculum which includes the chance to work with a variety of professionals

All our curriculum is underpinned by our Catholic belief that Christ is at the centre of all we do. Our behaviour policy is one of positive behaviour management where all children are valued and respected as individuals, where children are encouraged to reflect on their behaviour and in cases of wrong doing, identify a means to make retribution. It is our hope that all children will come to learn of God's love and compassion for everyone. We celebrate our talents and respect difference. We expect that all children, the Local Academy Committee, staff and parents will work together to maximise the educational opportunities for all.

The school is committed to safeguarding and promoting the welfare of children and young people and expects all staff and volunteers to share this commitment.

**A BRIEF SYNOPSIS OF OUR OFSTED SECTION 8 REPORT
19 March 2019**

Inspectors make an assessment about the “Overall Effectiveness” of the school.

Schools are categorised as one the following:-

Grade 1 – Outstanding

Grade 2 – Good

Grade 3 – Requires Improvement

Grade 4 – Inadequate

We are delighted to report that **the school has been judged as maintaining GOOD (Grade 2) in all aspects**. The report notes that we have retained a strong focus on ensuring that St Anthony’s is a happy school in which pupils thrive.

In March 2018, the school was judged OUTSTANDING in almost all aspects of their Section 48 Religious Education report.

A full version of the reports are available on the school website at www.stanthonys.slough.sch.uk Please take time to read the inspectors’ findings.

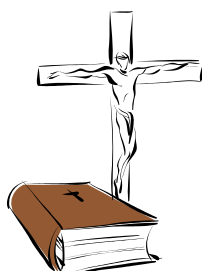
As Chair of the Local Academy Committee, I would like to thank our Head Teacher, the teachers and all other school staff who have contributed to the success of the school. I am also fully aware that a successful school is heavily reliant on the support of the parents and families of our pupils. So, to all of you who have helped the school achieve, may I offer my congratulations and thanks.

I look forward to working with all members of the school community over the coming years to deliver further improvements for all pupils.

Eva Antao-Bento
Chair of the Local Academy Committee

The Curriculum

The school offers a rich curriculum matched to the needs of the individual. We are committed to respecting the rights of all (Unicef Convention of the Rights of the Child) and to the equal opportunity of all.



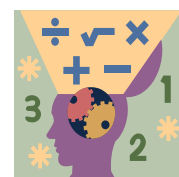
Children begin in Reception in the academic year in which they are five.

They follow the Early Years Framework which includes seven areas of learning.

In Years 1 to 6 the children follow the National Curriculum and the Directory for Religious Education. In Years 1 and 2 it is known as Key Stage 1 and in Years 3 to 6 it is known as Key Stage 2.

At the end of both Key Stages, the school fulfils its statutory duty to assess the children and report results to the Department for Education.

The school wishes to develop the whole child and therefore has a rich curriculum involving the Parish and creative partners from many walks of life. The children have the opportunity to work with professional dancers, artists and actors. The school actively supports all individuals and makes special provision for those with special educational needs. The school would like to inform parents that they have a right to withdraw their children from aspects of the curriculum and suggest that if they wish to do so, they make an appointment with the Head Teacher.



The school has established global links with Maliyadeva Model School in Sri Lanka and No. 5 Primary, Chengdu in China.

Performance is important for children's development and every year each class gives a concert for parents. Parents are also invited to class assemblies and to join the school in masses and other liturgies e.g. Harvest Festival, May Day Procession and St Anthony's Day celebrations.

Parents are welcomed into the school. They support classes with group work and reading. We believe that reading is fundamental to good standards and thus we run an early morning reading / breakfast group as well as extra after school sessions.



Before and After School Care

Children are welcome to come into the dining room at school from 8.15am every morning. They **must** bring an activity, colouring or reading book to occupy their time.



Parents can arrange for breakfast and after school care through Antz Kidz based at St Anthony's Church Crypt from 7.30am to 8.30am and 3.30pm to 6pm daily, during term time only, for a very reasonable charge. Please telephone 07598 062569 or email antzkidz@yahoo.com

Clubs

St Anthony's provides a vast range of lunchtime and after school clubs for children from Year 1 to Year 6. They include Basketball, Tag Rugby, Table Tennis, Gymnastics, Choir, Football, Cookery, Homework, Climbing Wall, Environmental, Netball, ICT, Board Games, Reading and Origami. Some of the clubs are free whilst others have a nominal fee. Clubs are changing constantly as different staff become available and different possibilities are explored.

Facilities

St Anthony's is fortunate to have wonderful grounds, an extensive sports field, a pond and wildlife area, a vegetable and flower garden and an outdoor classroom and a large Early Years outdoor learning area.



The school is housed in four main buildings and an extra classroom especially designated to music. The older building is known as the Farnham building and includes eight classrooms, with interactive boards, and a large hall and dining hall. The newer Stafford building houses a further seven classrooms, with interactive boards, a well resourced library, a specialist ICT room and a sports hall with a designated climbing wall. Our Padua building has six classrooms and an open atrium area for group work. Year 6 have the Lisbon building all to themselves in recognition of their increased maturity.

Dining Facilities

We aim to support all our children in adopting healthy eating patterns and therefore offer well balanced meals which are cooked on the premises at lunch time. Parents are issued with the menus in advance in order to help their children in their choice of food. Children order the meal of their choosing in the morning which is then cooked to order. All children in Reception, Year 1 and Year 2 have free cooked meals. Parents who are entitled to claim Free School Meals should contact the school office.

Health and Welfare

The School Health Service is part of the Berkshire East Primary Care Trust and the National Health Service. The service employs a School Nursing Team who make regular visits and perform routine checks on the children e.g. vision and hearing. Parents are notified and informed if there are any problems.

We have a highly trained staff who are able to administer first aid. If it is felt necessary a child may be sent home if staff feel they are too unwell to attend. Medicines are not administered at school unless there is an exceptional circumstance and permission is given, i.e. medication prescribed by a doctor.

Attendance

Children are expected to attend daily unless there is a medical reason. If a child's attendance falls below an acceptable level then the Attendance Officer makes contact. It is vital that children attend every day to ensure they maximise their opportunities to learn.

Our Community

We are fortunate to be placed beside our Parish church of St Anthony's. Our Parish priest is an important member of our community. The school makes visits throughout the year to the Church and Father visits the school. As a community we share many occasions throughout the year including a May Procession and St Anthony's Day celebrations.

We hold beginning and end of term masses, participate in Parish masses and share in liturgies with the community. At Harvest we thank God for the richness of our world and share our wealth with those not as fortunate.



We collect and distribute shoe boxes filled with goodies for Operation Christmas Child who distribute them to children in Eastern Europe. We have also sent shoe boxes to the Gambia and the School Council chooses a variety of charities throughout the year for whom the school collects money.

Parents are also an important part of our community. They are welcomed into school to help in class and to share in celebrating their children's success. Every term, time is made available for reporting more formally on children's progress including setting targets and at the end of the year a written report is given to parents. The Head Teacher has an open door policy and is happy to meet with parents to celebrate success or resolve any issues or problems.

School Council

Every class from Year 1 upwards elects two members who act as their ambassadors for the class. The children elect their own officers, have a budget and meet every month to discuss issues. They oversee the Rights Respecting Agenda and initiate fund raising for those less fortunate. Minutes of meetings are kept and published on a notice board. St Anthony's believes that pupils should play an active part in their school and that their views are valued.

Faith Ambassadors

Children representing Catholicism, all other faiths and no faith are carefully selected from across the school. They lead prayer and a range of other activities.

Rights Respecting Group

Children are encouraged to work together to develop an action plan to fight for causes involving peace both in school, in the wider community and in the world. The action group meet regularly and raise awareness of issues affecting others.

Eco Warrior Group

They remind us all to take care of God's world. They also encourage all within our community to reduce, reuse and recycle.

Home School Agreement

Parents, pupils and the school subscribe to the same philosophy and state this very clearly by signing the Home School Agreement every year.

Educational Visits and Visitors

At St Anthony's we aim to enrich the curriculum by inviting visitors in to share their experiences and by making as many visits as possible to places of educational interest. Visits might include: Chiltern Open Air Museum, The Lookout Discovery Centre, Odds Farm Park, Science Museum, Natural History Museum, Hampton Court, Verulamium, Tate Gallery, Black Park and Beale Park.

Residential visits to Bude (Year 5) and to Dunfield House (Year 6) are also key features of our curriculum and enjoyed by our pupils. We are very fortunate to have a committed staff who give so generously of their time.

We aim for all to participate in these activities and a voluntary contribution is requested to cover costs. There are occasions when for a variety of reasons parents have difficulty in meeting the voluntary contribution. We would like to stress that the school would aim to support parents to enable their child to participate.

Each year the children in Year 5 have the opportunity to go on a residential trip to Bude in Cornwall where they participate in many water sports.



Each year the children in Year 6 have the opportunity to go on a residential trip to Dunfield House in Herefordshire where they can learn about themselves, their relationships with others and their relationship with God.



Times of the School Day

08.45 Children to arrive, take off coats and get ready for the day

09.00 Registration

Nursery Hours

12.15 Lunch Hour

AM 8.30-11.30
PM 12.45—3.45

15.30 End of day - children to be collected by adult

All children have a 15 minute break in the morning.

Uniform - Most uniform can be purchased online at Recognition Express with the option of free delivery to school if this is more convenient.

Boys / Winter

Dark grey trousers

White shirt

School tie

School jumper

Black shoes

Girls / Winter

Dark grey trousers/grey skirt/grey pinafore dress

White blouse

School tie

School cardigan/jumper

Black shoes

Boys / Summer

Grey shorts/trousers

White polo shirt with school badge

School jumper

Black shoes

Girls / Summer

Light blue and white checked dress

Grey skirt

White polo shirt with school badge

School cardigan/jumper

Black shoes

Nursery

Tracksuit with school badge

White polo shirt

Black shorts

P.E. Kit

Black shorts

T-shirt (House colour allocated at time of entry into school)

P.E. bag

Plimsolls

Tracksuit with school badge (optional)



Hair

Boys - no shaving designs in hair

Girls - long hair should be tied back at all times and only black, brown or blue clips, bobbles or hair-bands to be worn. No bright hair dye to be used.

Equipment

Book bag

Prayer book

Pens/Pencils/Ruler/

Colouring Pencils etc.



Only stud earrings may be worn.

No other jewellery.

Earrings must be removed before P.E.

Local Academy Committee

The school is a member of the St Peter Catholic Academy Trust and strategic decisions may involve representation from the Board of Directors. We currently have vacancies for non-parent members and invite applications from anyone with particular strengths in Finance, Premises and Safeguarding.

The Local Academy Committee members have overall responsibility for the strategic direction of the school. The Local Academy Committee members meet as a body every term and most members serve one or more committees which meet regularly.

There are committees for:

- Resources which includes Premises, Finance and Personnel
- Catholic Life and Community which includes Admissions
- Curriculum which includes all matters relating to the curriculum, including Target Setting

Committees are responsible for formulating policies with appropriate professionals to bring to the full governing body. Members also meet as a panel when it is necessary e.g. disciplinary, exclusion and capability matters.

Day to day management of the school is delegated to the Head Teacher and the Leadership Team.

Gift Aid

This money has so far helped to replace old windows in various parts of the school, refurbish the toilet blocks, refurbishing the playground and adding new canopies, buying playground equipment, painting and decorating several of the classrooms, renewing the pathways from the church to the school, also the pathway to the Key Stage 2 playgrounds, and creating an outdoor learning area.

Termly requests will be sent. Filling in a standing order and Gift Aid form will enable monies to be collected readily. We are responsible for 10% for all large building works. As a Voluntary Aided school, we rely on donations to maintain our school buildings. We now ask our parents to make a voluntary donation of:

£15 per child per term, or £20 per family per term.

Your support in this matter is vital to the maintenance of our buildings and grounds and in the support of a high quality education.

Our Admission Policy can be viewed on the school website.

