

Our plan for REMOTE LEARNING

for partial or full school closure



1



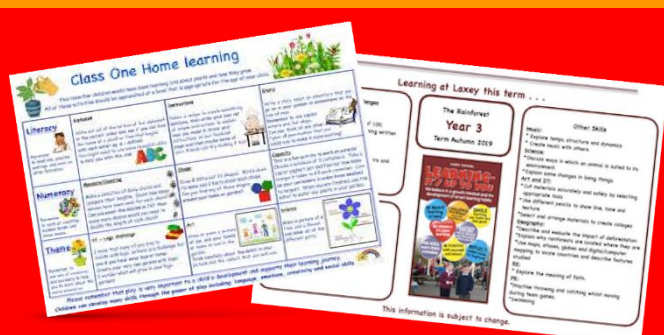
As soon as school is closed, or becomes closed for a particular class or year group, online lessons will begin for all pupils affected.

2



Online lessons will be scheduled for all affected pupils every school day during a closure. Where there are multiple classes or year groups affected, the learning will take place over the course of the day one after another.

3



In addition to the online lessons, home-learning activities will be available on the school website. These activities will be specific for the class or year groups affected and will go live within 24 hours of any closure.

4



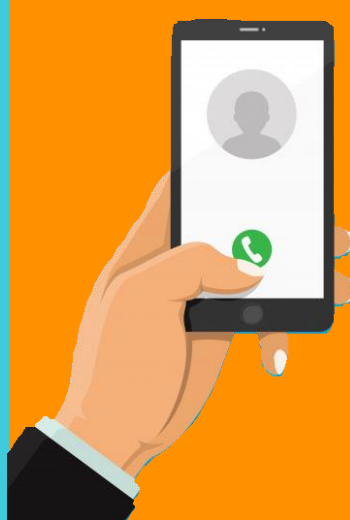
A weekly video message will be recorded by the teacher which will direct pupils towards identified activities on the home-learning grids. These messages will also include some helpful instruction /input to help your child complete the activities independently.

5



Teachers have already shared their email addresses with pupils & families, and will monitor these during any school closure to deal with queries and to offer feedback on work which has been completed.

6



A cycle of weekly phone-calls would begin immediately. Vulnerable families can expect phone contact in the first week of closure; SEN pupils in the second week; all parents/families in the third week; and all pupils in the fourth.

7



Our school website will remain updated with home-learning activities, a resource bank, letters and important documents. You can already find and download our emergency plan; COVID risk assessment; and other information.

8

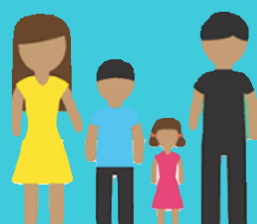


@stanthonyslough

And you can expect the same special touches that we developed during the original lockdown closures such as an active social media presence, video messages from the Headteacher, online assemblies, wellbeing checks and frequent communication.

We need parents and families to help with the plan...

Let school know NOW if you genuinely do not have a device that your child(ren) can use to access the online learning.



Be prepared to help your child during any closure - they will need assistance logging into lessons and may require adult help with some tasks.